

MARMARA DENİZİNDE SEYREDECEK KAPTANLARIN DIKKATİNE ATTENTION TO THE MASTERS NAVIGATING THROUGH THE SEA OF MARMARA

SİSMİK CALIŞMALAR, M/V BARBAROS HAYREDDİN PASA, M/V BRAVO SUPPORTER VE M/V KOFSO İSİMLİ GEMİLER İLE 10 NİS–10 AGU 2016 ARASINDA AŞAĞIDAKİ SAHADAYA YAPILACAKTIR

SEISMIC EXPLORATION, BY M/V BARBAROS HAYREDDİN PASA, M/V BRAVO SUPPORTER AND M/V KOFSO, BETWEEN 10 APR – 10 AGU 2016 IN AREA BOUNDED BY

- | | | | | | |
|-------------------|---------------|--------------------|---------------|--------------------|---------------|
| (1) 40°56'23.24"N | 27°55'42.25"E | (6) 40°59'08.55"N | 28°31'34.48"E | (11) 40°41'39.04"N | 27°26'28.40"E |
| (2) 41°01'23.94"N | 28°03'03.28"E | (7) 40°42'00.12"N | 28°27'00.18"E | (12) 40°57'40.26"N | 27°30'40.59"E |
| (3) 41°03'19.04"N | 28°08'08.02"E | (8) 40°41'31.49"N | 27°51'53.06"E | (13) 41°00'11.08"N | 27°46'47.31"E |
| (4) 41°04'03.12"N | 28°10'50.11"E | (9) 40°43'36.00"N | 27°51'18.00"E | | |
| (5) 41°01'40.56"N | 28°26'02.31"E | (10) 40°44'28.12"N | 27°36'28.29"E | | |

M/V BARBAROS HAYREDDİN PASA TARAFINDAN 5 KM (2,7 NM) UZUNLUGUNDA, 700 M (4 GOMINA) GENİSLİĞİNDE ALICI KABLOLARI ÇEKİLMEKTEDİR. ÇALIŞMA SAHASINA GİRİLMESİ TEHLİKELİDİR. SEYİR EMNİYETİ İÇİN AŞAĞIDAKİ COĞRAFİK NOKTALARI BİRLEŞTİREN HATLA BELİRLENEN GECİCİ İKİ YONLU ROTANIN VE DİKKATLİ BULUNULACAK SAHANIN KULLANILMASI ŞİDDETLE TAVSİYE EDİLİR.

M/V BARBAROS HAYREDDİN PASA IS TOWING SENSOR CABLES 5 KM (2,7 NM) LENGTH AND 700 M (4 CABLES) WIDE. IT IS DANGEROUS TO NAVIGATE IN EXPLORATION AREA. FOR SAFE NAVIGATION, IT IS STRONGLY RECOMMENDED TO USE THE TEMPORARY TWO-WAY ROUTE BOUNDED BY A LINE CONNECTING THE FOLLOWING GEOGRAPHICAL POSITIONS AND PRECAUTIONARY AREA.

KISIM 1/PART 1

- (1) 40° 37'.40 N 28° 30'.00 E
- (2) 40° 40'.30 N 28° 30'.00 E
- (3) 40° 37'.40 N 27° 53'.25 E
- (4) 40° 40'.30 N 27° 55'.00 E

KISIM 2/PART 2

- (3) 40° 37'.40 N 27° 53'.25 E
- (4) 40° 40'.30 N 27° 55'.00 E
- (5) 40° 41'.00 N 27° 40'.25 E
- (6) 40° 43'.70 N 27° 42'.40 E

KISIM 3/PART 3

- (5) 40° 41'.00 N 27° 40'.25 E
- (6) 40° 43'.70 N 27° 42'.40 E
- (7) 40° 41'.20 N 27° 37'.50 E
- (8) 40° 43'.85 N 27° 38'.25 E

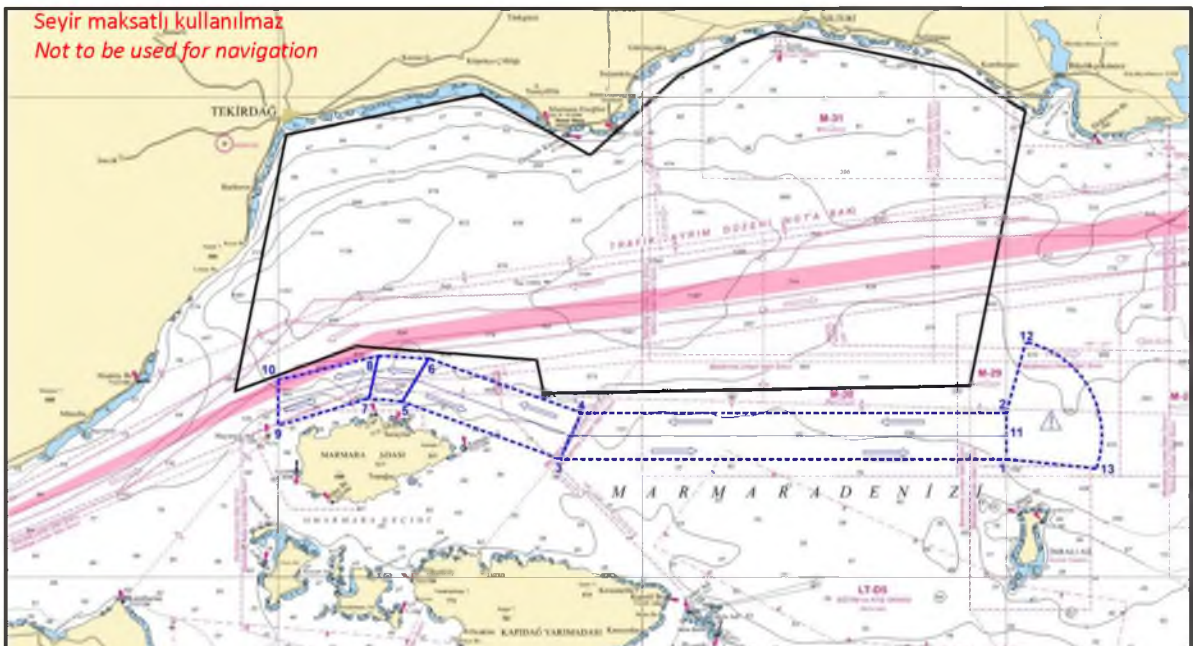
KISIM 4/PART 4

- (7) 40° 41'.20 N 27° 37'.50 E
- (8) 40° 43'.85 N 27° 38'.25 E
- (9) 40° 39'.50 N 27° 30'.00 E
- (10) 40° 42'.35 N 27° 30'.00 E

DİKKATLİ BULUNULACAK SAHA/PRECAUTIONARY AREA

- (11) 40° 38'.85 N, 28° 30'.00 E
- (12) 40° 44'.70 N, 28° 31'.60 E
- (13) 40° 36'.81 N, 28° 37'.40 E

Merkezi, coğrafi nokta (11) olan, sınırları ise coğrafi nokta (2) ve (12)'yi birleştiren hat ile coğrafi nokta (1) ve (13)'ü birleştiren hatla biten 6 nm yarıçapındaki dairesel sektör. A Circular sector pointed on geographical position (11) with a radius of 6 nm limited by lines joining positions (2) and (12) and joining positions (1) and (13).



Not: Tüm koordinatlar WGS84 datumunda hazırlanmıştır/All coordinates are referred to WGS84 datum